

Chicago

Lighting Purchase Order Proposal
Version: C

Lighting Designer: Mike McShane
Scenic Designer: Jovon Eberhart

Lighting Purchase Order Proposal

Warm White LED Backlight Modules will be used as an accent to backlight the rivets on the hexagon.



These will be arranged in circuits as shown in circuiting drafting.

Discussions to be held between designers as of the possible separating of glowing vertical and horizontal rivets on either half of the platforming. If the glowing rivets are reduced to one side of the platform, one less package of LED Backlight modules will need to be ordered.

Warm White LED Modules come in packs of fifty modules per pack lighting up 100 rivets each. Each pack is \$139. I wish to order 7 packs to light up the horizontals, verticals, and the full bottom of the platform containing approximately 604 rivets. If the conceit of lighting only one side of the platform remains, there will be 515 rivets lit up and not the full bottom of the platform.

[ADDENDUM – October 8, 2011]

With the success of the rivet testing, I would request that the whole hexagon be lit with these rivets.

CURRENTLY HAVE:

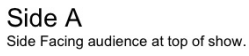
*All rivets lit up on one half of the hexagon
[Conceit discussed between scenic and lighting]*

REQUESTED:

**Modules to complete hexagon in LED Rivets, with replacement modules
[256 modules, 44 spares]
Modules = \$139/pack of 50
TOTAL = \$834**

The scenic and lighting designers for the next production, Agbididi, were interested in exploring using these LEDs as part of a tree for the scenic design. Could funds be allocated for this purchase should the designers want to further this idea?

VECTORWORKS EDUCATIONAL VERSION



Side B
Side Facing upstage at top of show.

Rivets Circuited

VECTORWORKS EDUCATIONAL VERSION

Lighting Purchase Order Proposal

LED BACK LIGHT MODULES

MODEL: BV-Strip LBL-50-3-12V-W

LED WORLD INC
1800-387-4081
www.ledworldlighting.com

FEATURES

- LED Modules are sealed to IP67 Standard.
- Peel & stick adhesive back or screw mount.
- 5060 SMD Tri chip. Three LEDs in each chip x 3 SMD LEDs.
- Low voltage, energy efficient, virtually no maintenance. Can be cut between each module (by locally licensed electricians).
- UL recognize component (SAMS)

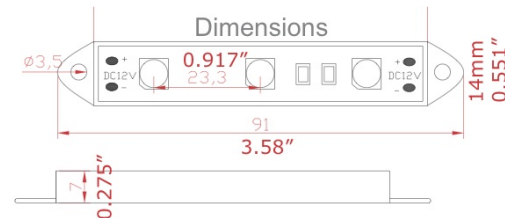
Application:

- Concealed Lighting
- Backlighting for Signage Letters
- Channel Letter Lighting
- Cove lighting
- Field Separable

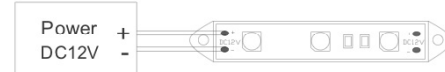


SPECIFICATIONS:

Item: BV-Strip-LBL-50-3-12V-W (or WW)
Max voltage: 12 VDC
Wattage: 0.72 each Module
Set Length: 20ft (6.1M) / 50 Modules
Watt/set: 36 (50 Modules)
Dimensions: 91(L)*14(W)*7(H)mm Each Module
Weight: 5g
Connector: Pigtail Wire (at each end)
Housing: PVC
LEDs Type: 5050 SMD Tri Chip (3x3)
LED Angle: 120°
Lamp life: 40,000 hours estimated average
IP Rating: IP67 (not including connection)
Brightness: 45-50 LM Module / White 3200/5500k
Modules/Set 50 per pack, 50mm (2") wire spacing
Max Modules: 50 Modules continuous by wire (20 AWG)
Certification: CE RoHS cRUus (UL) E318168**
Max Run: 50 Modules (3A)



Connection With Power Supply:

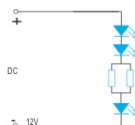


Notes: 1. All dimension units are millimeters.
2. All dimension tolerance is $\pm 1\text{mm}$ unless otherwise noted

Technical Parameter: TA=25 / Module

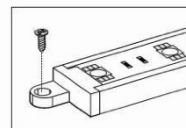
BV-Strip-PG-0.5W3	Extn	Color	Operating Voltage (V)	Current (mA)	Wattage (W)	Color Temperature (K) Wavelength	View Angle	Luminous (lm)		LED Qty	Housing Material
Part No.								min	max		
BV-Strip-PG-0.5W3	-W/WW	White	12	60	.72	(2700-6000)	120	40	50	3	PVC
BV-Strip-PG-0.5R3	R	Red	12	60	.72	625	120	12	14	3	PVC
BV-Strip-PG-0.5Y3	Y	Yellow	12	60	.72	590	120	11	13	3	PVC
BV-Strip-PG-0.5G3	G	Green	12	60	.72	525	120	18	21	3	PVC
BV-Strip-PG-0.5B3	B	Blue	12	60	.72	470	120	6	9	3	PVC

Circuit Diagram:

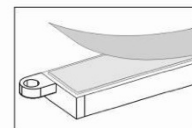


Caution:

When using power supplies; the following basic safety features should be verified in addition to any other application specific concerns and local safety codes:
Short circuit protection.
Overload protection.
Overheat protection.
Correct output voltage, including consideration for ripple and spikes.
Correct wire gauge.
NOTE: Pigtail wires at both ends. Terminate wires at one end to prevent crossover and short circuit.



1. Please rip PE adhesive tape on the back of the product, then stick to the objects where you want.

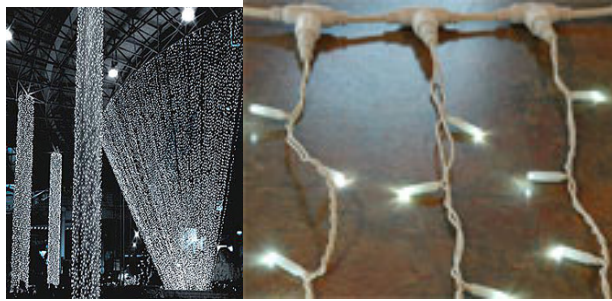


2. Use the screws to fasten it again.

Specifications subject to change without notice. Expect some variations in product due to changes in the manufacturing process. ** When used with Class two 12vdc power supply. Noted trademarks are owned by their registered company. All rights reserved. *Actual life of LED will vary with application and install environment. Luminosity of LEDs is provided by the manufacturer at 100 hours of use. Actual luminosity of LEDs will vary with hours of use and environmental conditions.

Lighting Purchase Order Proposal

LED Light Curtain will be used for the finale of *Hot Honey Rag*. Similarly emulating the movie Chicago (dir. Rob Marshall.)



These will be constructed in panels to span the stage. See attached drafting.

LED Light Curtain – [20' x 26' - 4"]

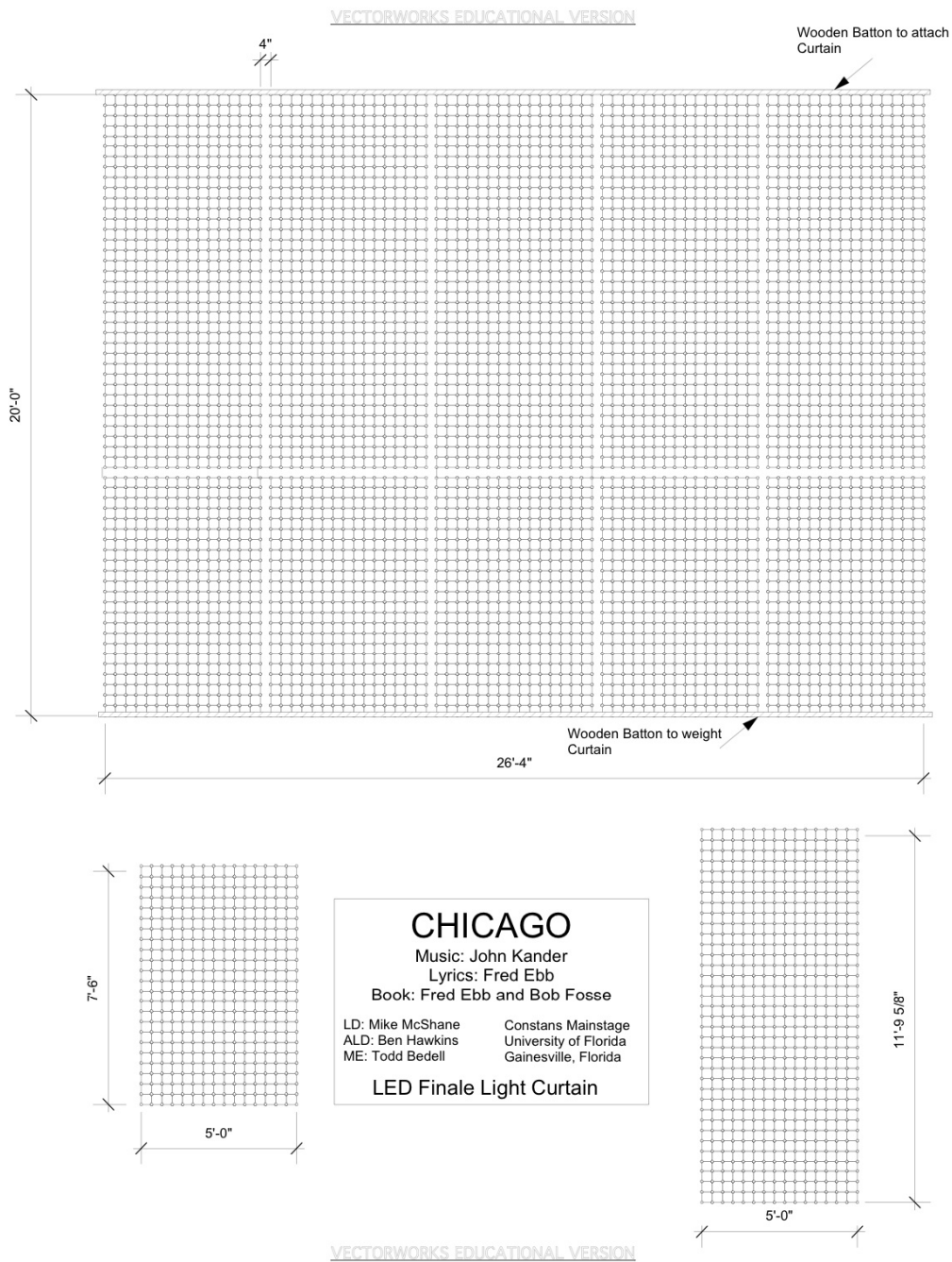
[Conceit discussed between scenic and lighting]

[5' x 11' – 9 5/8"] \$169 each ***Quantity Requested – 5 Total***

[5' x 7' - 6"] \$149 each ***Quantity Requested – 5 Total***

TOTAL = \$1590

Lighting Purchase Order Proposal



Lighting Purchase Order Proposal

Rain curtain will be used as a different backdrop to the cyc specifically for the songs and dance numbers. Songs like “Funny Honey” and “I Can’t Do It Alone” being two specific instances. It will be flown in and out when appropriate and will not be a default backdrop. Color of two mylar strips TBD as per scenic.

50’ by 38’ Rain Curtain

[Segmented as per scenic’s needs, possibly 6 sections of 8’ 4”.]

TOTAL = \$1161.60

Blackout curtain will be used as a different backdrop to the cyc specifically for the songs and dance numbers. Songs like “I Can’t Do It Alone (Reprise)” and “Mister Cellophane” being two specific instances. It will be flown in and out when appropriate and will not be a default backdrop.

Blackout Curtain

[Element to be purchased to replace UF’s MIA Blackout Curtain.]

TOTAL = TBD

[The great thing about flying in both of these elements is the fact that the whole musical has built in the conceit of Roxie, Velma, and the other characters putting on a show. The curtain could fly in during a number as opposed to flying it in during a blackout.]